

# CUBE BASIC

## Assembly instruction

Mounted on drawer bottom.



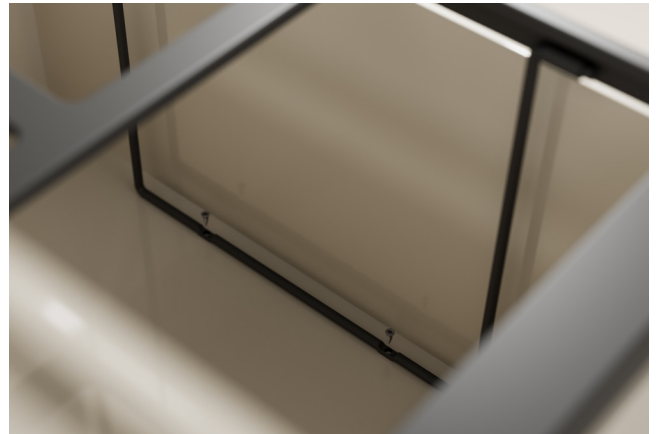
**1.** Unfold the leg from the frame.



**2.** Place the frame in the drawer. Make sure that it is centered so that you can close the drawer.



**3.** Measure with a spirit level so that the frame is straight.



**4.** Attach the frame on the bottom of the drawer using 2 screws.



**5.** Attach the frame on the front of the drawer using 2 screws. 1 screw on each side.



**6.** Insert bins, lid and dividers.